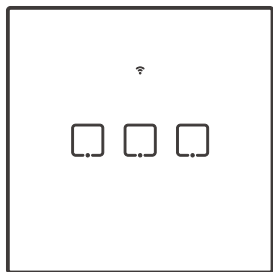


SONOFF

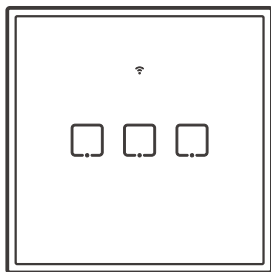


TX EU

User manual V1.2



T0/T1

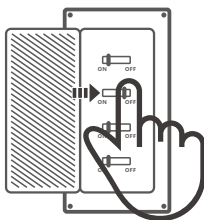


T2/T3

Wi-Fi Smart Wall Switch

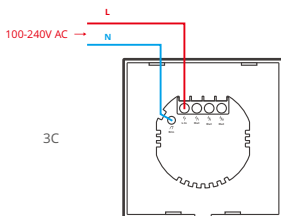
Operating Instruction

1. Power off



⚠ To avoid electric shocks, please consult the dealer or a qualified professional for help when installing and repairing!

2. Wiring instruction

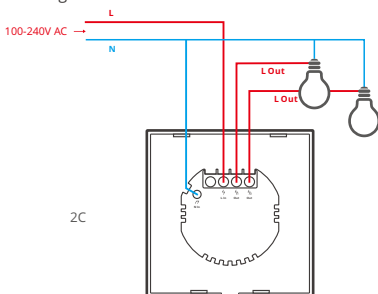


\overline{N} In | Neutral input

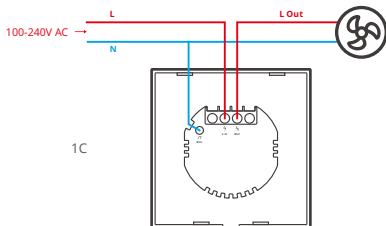
\overline{L} In | Live input

\overline{L}_1 Out \overline{L}_2 Out \overline{L}_3 Out | Live output

Light fixture wiring instruction:



Appliance wiring instruction:



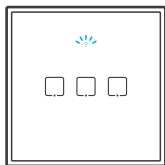
ⓘ Make sure the neutral wire and live wire connection is correct.

3. Download APP



Android™ & iOS

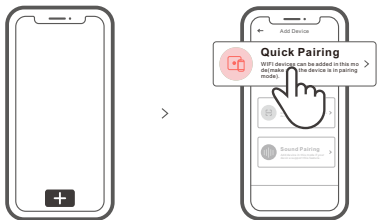
4. Power on



After powering on, the device will enter the quick pairing mode (Touch) during the first use. The Wi-Fi LED indicator changes in a cycle of two short and one long flash and release.

ⓘ The device will exit the quick pairing mode (Touch) if not paired within 3mins. If you want to enter this mode, please long press any configuration button for about 5s until the Wi-Fi LED indicator changes in a cycle of two short and one long flash and release.

5. Add the device



Tap "+" and select "Quick Pairing", then operate following the prompt on the APP.

Compatible Pairing Mode

If you fail to enter Quick Pairing Mode (Touch), please try "Compatible Pairing Mode" to pair.

- 1 Long press Pairing button for 5s until the Wi-Fi LED indicator changes in a cycle of two short flashes and one long flash and release. Long press Pairing button for 5s again until the Wi-Fi LED indicator flashes quickly. Then, the device enters Compatible Pairing Mode.
- 2 Tap "+" and select "Compatible Pairing Mode" on APP.

Select Wi-Fi SSID with ITEAD-***** and enter the password 12345678, and then go back to eWeLink APP and tap "Next". Be patient until pairing completes.

RF Remote Controller Pairing

The switch supports the remote controller with 433MHz frequency brand to turn on/off, and each channel can learn it independently, which is local short-range wireless control not Wi-Fi control.

Pairing Method:

Long press the touch button you want to pair for 3s until you hear a "beep" sound and release, then press the corresponding button on the RF remote controller, and you will hear a "beep" sound again after successful pairing. Other buttons can be paired through this method.

Clearing Method:

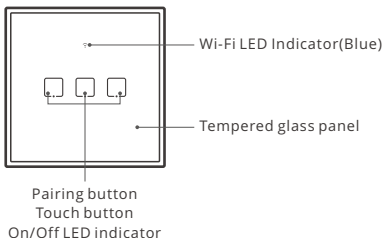
Long press the touch button you want to clear for 5s until you hear two "beep" sounds and release, then press the corresponding button on the RF remote controller, and you will hear a "beep" sound again after successful clearing. Other buttons can be cleared through this method.

Specifications

Model	T0EU1C/T0EU2C/T0EU3C T1EU1C/T1EU2C/T1EU3C T2EU1C/T2EU2C/T2EU3C T3EU1C/T3EU2C/T3EU3C
Max. input	T0/T1/T2/T3(EU1C): 100-240V AC 50/60Hz 2A T0/T1/T2/T3(EU2C): 100-240V AC 50/60Hz 4A T0/T1/T2/T3(EU3C): 100-240V AC 50/60Hz 3A
Max. output	T0/T1/T2/T3(EU1C): 100-240V AC 50/60Hz 2A T0/T1/T2/T3(EU1C): 100-240V AC 50/60Hz 2A/Gang 4A/Total T0/T1/T2/T3(EU1C): 100-240V AC 50/60Hz 1A/Gang 3A/Total
LED load	T0/T1/T2/T3(EU1C/ EU2C) : 150W/110V(per channel) , 300W/220V(per channel) T0/T1/T2/T3(EU3C) : 60W/110V(per channel) , 100W/220V(per channel)
Wi-Fi	IEEE 802.11 b/g/n 2.4GHz
RF	433.92MHz
Operating systems	Android & iOS
Materials	PC +tempered glass panel
Dimension	86x86x35mm

⚠ T0(EU1C/EU2C/EU3C)does not support the remote controller with 433.92MHz.

Product Introduction



⚠ The device weight is less than 1 kg.
The installation height of less than 2 m is recommended.

Wi-Fi LED indicator status instruction

Wi-Fi LED indicator status	Status instruction
Flashes (one long and two short)	Quick Pairing Mode
Keeps on	Device is connected successfully
Flashes quickly	Compatible Pairing Mode
Flashes quickly once	Unable to discover the router
Flashes quickly twice	Connect to the router but fail to connect to Wi-Fi
Flashes quickly three times	Upgrading

Features

Turn on/off the light or fan from anywhere, schedule it power on/off and share it with your family to control together.



Remote Control

Single/Countdown
Timing

Voice Control



Share Control



Smart Scene

433MHz
Remote Control

Camera Feature



Touch Control



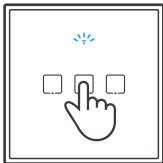
LED Backlight



LAN Control

Factory Reset

Long press any button you desired to pair for about 5s until the Wi-Fi LED indicator changes in a cycle of two short and one long flash and release, then the reset is successful. The device enters quick pairing mode (Touch).



ⓘ Please reset the switch to factory defaults if you want to use other Wi-Fi networks, then reconnect the network.

Common Problems

Q: Why my device stays "Offline"?

A: The newly added device needs 1 – 2mins to connect Wi-Fi and network. If it stays offline for a long time, please judge these problems by the blue Wi-Fi indicator status:

1. The blue Wi-Fi indicator quickly flashes once per second, which means that the switch failed to connect your Wi-Fi:
 - ① Maybe you have entered a wrong Wi-Fi password.
 - ② Maybe there's too much distance between the switch your router or the environment causes interference, consider getting close to the router. If failed, please add it again.
 - ③ The 5G Wi-Fi network is not supported and only supports the 2.4GHz wireless network.
 - ④ Maybe the MAC address filtering is open. Please turn it off.

If none of the above methods solved the problem, you can open the mobile datanetwork on your phone to create a Wi-Fi hotspot, then add the device again.

2. Blue indicator quickly flashes twice per second, which means your device has connected to Wi-Fi but failed to connect to the server.

Ensure steady enough network. If double flash occurs frequently, which means you access an unsteady network, not a product problem. If thenetwork is normal, try to turn off the power to restart the switch.

Hereby, Shenzhen Sonoff Technologies Co., Ltd. declares that the radio equipment type T0EU1C/T0EU2C/T0EU3C/T1EU1C/T1EU2C/T1EU3C/T2EU1C/T2EU2C/T2EU3C/T3EU1C/T3EU2C/T3EU3C is in compliance with Directive 2014/53/EU. The full text of the EU declaration of conformity is available at the following internet address:

<https://sonoff.tech/usermanuals>

TX Frequency:

WiFi: 2412-2472MHz

RX Frequency:

WiFi: 2412-2472MHz

SRD: 433.92MHz

RF Output Power:

13.86dBm

The logo features the word "SONOFF" in a bold, black, sans-serif font. Above the letter "O" in "SONOFF", there are three curved lines representing radio signal waves, indicating the company's focus on wireless technology.

Shenzhen Sonoff Technologies Co., Ltd.

1001, BLDG8, Lianhua Industrial Park, shenzhen, GD, China
ZIP code: 518000 Website: sonoff.tech

MADE IN CHINA

