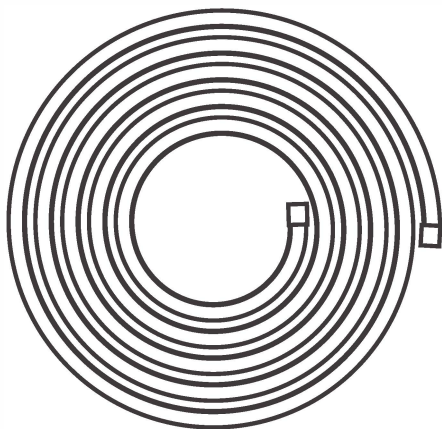


# SONOFF



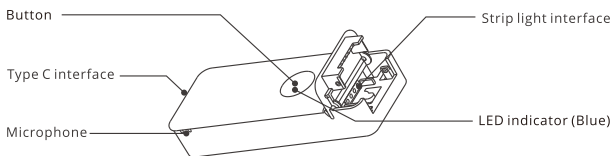
## L3 & L3 Pro

User manual V1.0



Smart LED Strip Lights

## Controller introduction



## Button features

Short press: Turn on/off the strip light

Long press for 5s: Make strip light enter in the pairing mode (LED indicator flashes)

ⓘ Short press the button to exit the pairing mode while it is in the pairing mode.

## Features

L3&L3 Pro both are smart strip lights, which have 16 million colors and support switching various scene modes through your smartphone or voice control. Also, you can select different modes based on the music styles to sync the music with gorgeous lighting.



App Control



Voice Control



Timer Schedule



Share Control



Dimming



Music Reactive Mode



16M Colors



Group Control



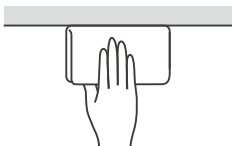
bluetooth Control



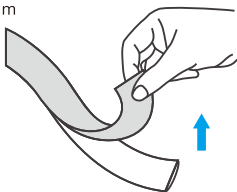
Scenes Mode

## Operation instruction

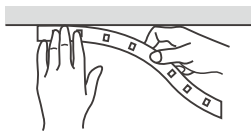
1. Clean the surface



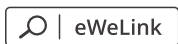
2. Peel off the protective film



3. Stick it on

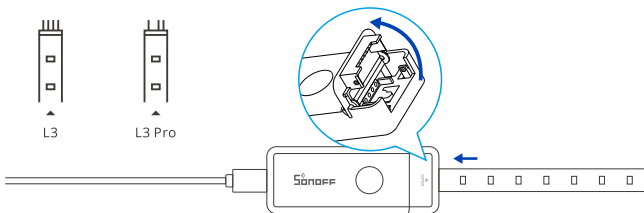


4. Download the eWeLink App



Android™ & iOS

## 5. Power on

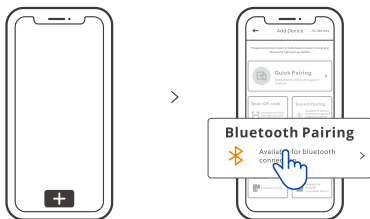


Power on the LED strip light with a Type-C USB cable, after powering on, it will enter the Bluetooth pairing mode by default and flashes.



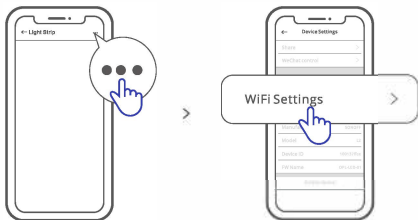
The strip lights will exit the Bluetooth pairing mode if it not be paired within 3 mins. If you want to enter this mode again, please long press the controller for 5s until the strip lights “flashes” then release.

## 6. Add light strip



Tap “+” and select “Bluetooth Pairing”, then operate following the prompt on the App.

## Wi-Fi Settings



Select the "Wi-Fi Settings" on the "Device Settings" interface in the eWeLink App to add or change the network.

ⓘ When Wi-Fi is disconnected, the device will automatically switch to Bluetooth control (Ensure Bluetooth is enabled on your mobile phone).

## Specifications

Models: L3-5M, L3-5M-P

### Light Strips

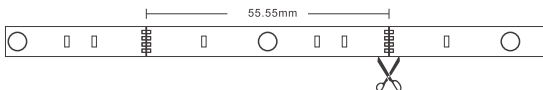
Input Voltage	5V DC	
Luminous Flux	L3: 150Lm	L3 Pro: 160Lm
LED QTY	L3: 90pcs	L3 Pro: 150pcs
IP Rating	L3: IP20	L3 Pro: IP54
CCT	2500-6500K	
Beam Angle	120°	
Life Expectancy	Appr. 30000h	
Material	FPCB	
Working temperature	-10°C ~ 40°C	
LED strip length	5m	

### Controller

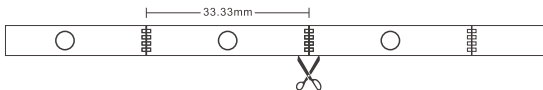
Input	5V DC
Output	5V DC 2A
Max. power	10W
Wi-Fi	IEEE 802.11 b 2.4GHz
Bluetooth standards	5.0 BLE
Shell material	PC V0
Dimension	79.5x29.5x13.5mm

## Cutable

L3 : Cutable every 55.55mm



L3 Pro : Cutable every 33.33mm



⚠ Please note that the light strips cannot be restored if you cut it.

## Factory Reset

Deleting the device on the eWeLink App indicates you restore it to factory setting.

## Safety Warning

1. Before use, please confirm that the voltage is appropriate for this product's working voltage. Using inappropriate voltage may damage the product and bring safety hazards.
2. LED Light Sources are unchangeable, please don't dismantle them.
3. The Strip Lights will generate heat during working, please keep air circulation for heat dissipation.

## FCC Warning

Changes or modifications not expressly approved by the party responsible for compliance could avoid the user's authority to operate the equipment.

This device complies with part 15 of the FCC Rules. Operation is subject to the following two conditions: (1) This device may not cause harmful interference, and (2) this device must accept any interference received, including interference that may cause undesired operation.

### **FCC Radiation Exposure Statement:**

This equipment complies with FCC radiation exposure limits set forth for an uncontrolled environment. This equipment should be installed and operated with minimum distance 20cm between the radiator & your body. This transmitter must not be co-located or operating in conjunction with any other antenna or transmitter.

### **Note:**

This equipment has been tested and found to comply with the limits for a Class B digital device, pursuant to part 15 of the FCC Rules. These limits are designed to provide reasonable protection against harmful interference in a residential installation. This equipment generates, uses and can radiate radio frequency energy and, if not installed and used in accordance with the instructions, may cause harmful interference to radio communications. However, there is no guarantee that interference will not occur in a particular installation. If this equipment does cause harmful interference to radio or television reception, which can be determined by turning the equipment off and on, the user is encouraged to try to correct the interference by one or more of the following measures:

- Reorient or relocate the receiving antenna.
- Increase the separation between the equipment and receiver.
- Connect the equipment into an outlet on a circuit different from that to which the receiver is connected.
- Consult the dealer or an experienced radio/TV technician for help.

Hereby, Shenzhen Sonoff Technologies Co., Ltd. declares that the radio equipment type L3-5M/L3-5M-P are in compliance with Directive 2014/53/EU. The full text of the EU declaration of conformity is available at the following internet address:

<https://sonoff.tech/usermanuals>

The logo features the word "SONOFF" in a bold, black, sans-serif font. Above the letter "O" in "SONOFF", there are three curved lines representing radio signal waves, indicating the company's focus on smart home automation.

**Shenzhen Sonoff Technologies Co., Ltd.**

3F & 6F, Bldg A, No. 663, Bulong Rd, Shenzhen, Guangdong, China  
ZIP code: 518000 Website: sonoff.tech

MADE IN CHINA

