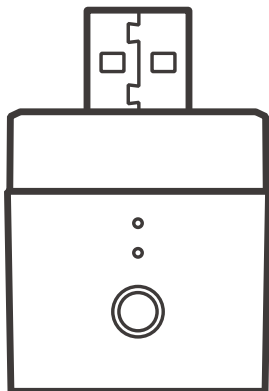


# SONOFF



## DIY Micro

User manual V1.0

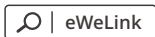


## USB Smart Adapter

---

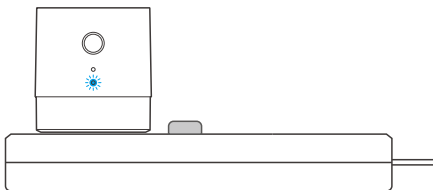
# Operation instruction

## 1. Download eWeLink APP



Android™ & iOS

## 2. Power on

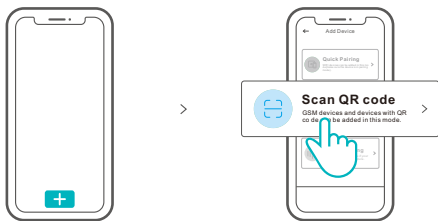


Powering on, the device will enter the quick pairing mode (Touch) during the first use. The Wi-Fi indicator flashes quickly.

⚠ It will exit the pairing mode (Touch) if the device is not paired within 3mins. If you want to enter this mode again, long press the configuration button for 5s until the Wi-Fi indicator flashes quickly and release.

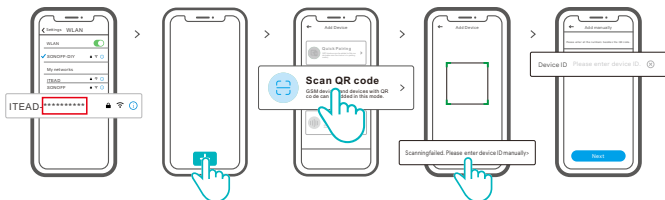
## 3. Add the device

**Method 1:** Scan the code to add (recommended)



Tap "+" and select "Scan QR code", then scan the QR code on the card in the package to add the device.

## Method 2: manual to add

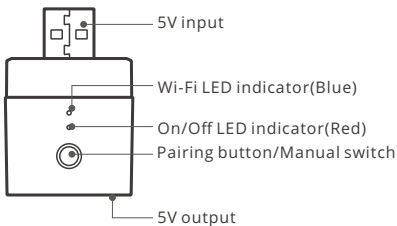


- ① Set the device to the pairing mode, and find the Wi-Fi SSID with ITEAD-\*\*\*\*\* on your mobile phone, and save last 10 digital codes (The digital code is the unique ID of the device)
- ② Go back to "eWeLink" App, tap "+", select "Scan QR code", then tap the word "Scanning failed. Please enter device ID manually" on the bottom and save the device ID, tap "Next" and wait until the adding is successful.

## Specifications

Model	Micro
Input	5V $\equiv$
Output	5V $\equiv$ 2.5A
Operating systems	Android & iOS
Wi-Fi	IEEE 802.11 b/g/n 2.4GHz
Working temperature	-10°C ~ 40°C
Material	PC V0
Dimension	31x26.5x33mm

## Product Introduction



## Wi-Fi LED indicator status instruction

LED indicator status	Status instruction
Blue light flashes quickly	Pairing mode
Blue light is always on	Device is connected successfully
Blue light flashes quickly once	Unable to find the router
Blue light flashes quickly twice	Successfully connect to the router but Wi-Fi is not connected
Blue light flashes quickly three times	Upgrading

## Features

Micro is a portable mini USB smart adaptor that makes your USB devices smart. You can remotely turn on/off the connected devices of your home anywhere, schedule it on/off and share it with your family to control together.



Remote Control



Single/Countdown Timing



Voice Control



Share Control



Sync Status



Camera Linking



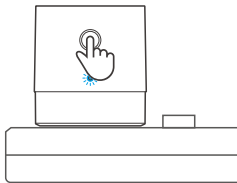
Power-on State



Smart Scene

## Switch Network

If you need to change the network, long press the pairing button for 5s until the Wi-Fi indicator flashes quickly and release., then the device enters pairing mode and you can pair again.



## Factory Reset

Deleting the device on the eWeLink app indicates you restore it to factory setting.

## Common Problems

Q: Why my device stays "Offline"?

A: The newly added device needs 1 – 2mins to connect Wi-Fi and network. If it stays offline for a long time, please judge these problems by the blue Wi-Fi indicator status:

1. The blue Wi-Fi indicator quickly flashes once per second, which means that the switch failed to connect your Wi-Fi:
  - ① Maybe you have entered a wrong Wi-Fi password.
  - ② Maybe there's too much distance between the switch your router or the environment causes interference, consider getting close to the router. If failed, please add it again.
  - ③ The 5G Wi-Fi network is not supported and only supports the 2.4GHz wireless network.
  - ④ Maybe the MAC address filtering is open. Please turn it off.

**If none of the above methods solved the problem, you can open the mobile datanetwork on your phone to create a Wi-Fi hotspot, then add the device again.**

2. Blue indicator quickly flashes twice per second, which means your device has connected to Wi-Fi but failed to connect to the server.

Ensure steady enough network. If double flash occurs frequently, which means you access an unsteady network, not a product problem. If the network is normal, try to turn off the power to restart the switch.

Hereby, Shenzhen Sonoff Technologies Co., Ltd. declares that the radio equipment type Micro is in compliance with Directive 2014/53/EU. The full text of the EU declaration of conformity is available at the following internet address:

<https://www.sonoff.tech/usermanuals>

**TX Frequency:**

WiFi: 2412-2472MHz/2422-2462MHz

**RX Frequency:**

WiFi: 2412-2472MHz/2422-2462MHz

**Output Power:**

11.49dBm(802.11b), 10.61dBm(802.11g),  
11.09dBm(802.11n20), 11.44dBm(802.11n40)



**Shenzhen Sonoff Technologies Co., Ltd.**

1001, BLDG8, Lianhua Industrial Park, shenzhen, GD, China

ZIP code: 518000

Website: sonoff.tech

MADE IN CHINA

