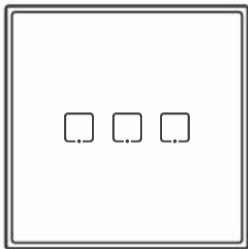


SONOFF

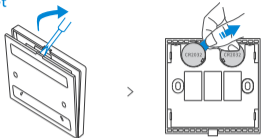
TX T2EU-RF

User manual V1.0



433MHz Wireless Stick-on Smart Wall Switch

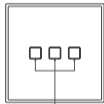
Pull out the battery insulation sheet



- ① The device has the version with battery and without battery.

Product Introduction

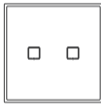
This device is used with SONOFF TX Wi-Fi smart wall switches (with 433MHz) together, and also works with other 433MHz smart devices.



Touch switch/RF pairing button



1C



2C



3C

- ① The device only supports pairing one button at a time. Please refer to the switch user manual for RF pairing and clearing method.

Product Specification

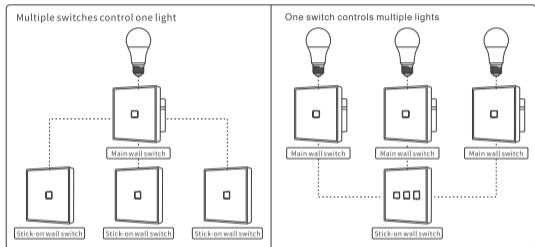
Model	T2EU1C-RF/T2EU2C-RF/T2EU3C-RF/T3EU1C-RF/T3EU2C-RF/T3EU3C-RF		
Power supply	6V (3V button cell x 2)		
Battery model	CR2032	RF	433.92MHz
Materials	PC+tempered glass panel	Dimension	86x86x9mm

- ① T3EU1C-RF/T3EU2C-RF/T3EU3C-RF with black color are not released yet.

Supported SONOFF devices

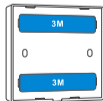
- RFR2
 - BASICRFR3
 - SlampherR2
 - 4CHPROR3
- TX EU/UK/US Wi-Fi smart wall switches (with 433MHz) series

Control Ways

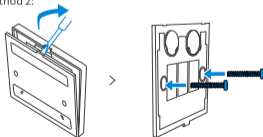


Installation Methods

Method 1:



Method 2:



ⓘ The device weight is less than 1kg. The installation height of less than 2m is recommended.

FCC Warning

Changes or modifications not expressly approved by the party responsible for compliance could void the user's authority to operate the equipment.

This device complies with part 15 of the FCC Rules. Operation is subject to the following two conditions: (1) This device may not cause harmful interference, and (2) this device must accept any interference received, including interference that may cause undesired operation.

FCC Radiation Exposure Statement:

This equipment complies with FCC radiation exposure limits set forth for an uncontrolled environment. This equipment should be installed and operated with minimum distance 20cm between the radiator & your body. This transmitter must not be co-located or operating in conjunction with any other antenna or transmitter.

Note:

This equipment has been tested and found to comply with the limits for a Class B digital device, pursuant to part 15 of the FCC Rules. These limits are designed to provide reasonable protection against harmful interference in a residential installation. This equipment generates, uses and can radiate radio frequency energy and, if not installed and used in accordance with the instructions, may cause harmful interference to radio communications. However, there is no guarantee that interference will not occur in a particular installation. If this equipment does cause harmful interference to radio or television reception, which can be determined by turning the equipment off and on, the user is encouraged to try to correct the interference by one or more of the following measures:

- Reorient or relocate the receiving antenna.
- Increase the separation between the equipment and receiver.
- Connect the equipment into an outlet on a circuit different from that to which the receiver is connected.
- Consult the dealer or an experienced radio/TV technician for help.

Hereby, Shenzhen Sonoff Technologies Co., Ltd. declares that the radio equipment type T2EU1C-RF/T2EU2C-RF/T2EU3C-RF/T3EU1C-RF/T3EU2C-RF/T3EU3C-RF is in compliance with Directive 2014/53/EU. The full text of the EU declaration of conformity is available at the following internet address:

<https://sonoff.tech/usermanuals>

TX Frequency: SRD:433.92MHz

RF Output Power: 4.88dBm EIRP



Shenzhen Sonoff Technologies Co., Ltd.

1001, BLDG8, Lianhua Industrial Park, shenzhen, GD, China

ZIP code: 518000

Website: sonoff.tech

MADE IN CHINA

