

Zyklus Mini 1



EAN:	4013288182180	Size:	200x105x60 mm
Part number:	05135918001	Weight:	566 g
Article number:	KK Zyklus Mini 2	Country of origin:	CZ
		Customs tariff number:	82041100

- Drop-forged, full-steel ratchet design
- For screwdriving in very confined working situations
- Zyklus sockets 8790 FA for direct insertion in the Zyklus Mini 2
- Bit holder, 9 sockets, 14 bits and 1 adaptor
- In robust textile box

Ratchets and screws in a Kraftform Kompakt format. These drop-forged, full-steel ratchets, Zyklus Mini 1 and 2, combine filigree design with incredible robustness. For particularly rapid screwdriving in confined working situations. Zyklus Mini 1 or Zyklus Mini 2 can be used whenever screwdriving with power tools or conventional hand tools is unfeasible for lack of space. 1 bit ratchet Zyklus Mini 1; suitable for the take-up of bits with 1/4" hexagon head drive as per DIN ISO 1173-C 6.3 and E 6.3 and Wera connecting series 1 and 4; also possible to use 1/4" sockets by attaching the Wera adaptor 870/1. 1 socket ratchet Zyklus Mini 2; suitable for the direct attachment of Wera Zyklus special sockets 8790 FA.

Web link

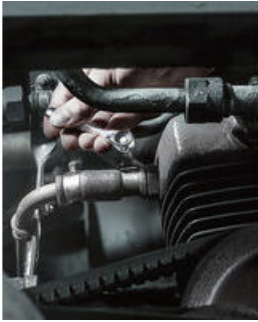
https://products.wera.de/en/zyklus_ratchets_and_accessories_zyklus_mini_zyklus_mini_1_kk_zyklus_mini_2.html

Wera - KK Zyklus Mini 2
05135918001 - 4013288182180

Wera Werkzeuge GmbH
Korzerter Straße 21-25
D-42349 Wuppertal
Tel: +49 (0)2 02 / 40 45-0
E-Mail: info@wera.de

Zyklus Mini 1

The Zyklus Mini Ratchets

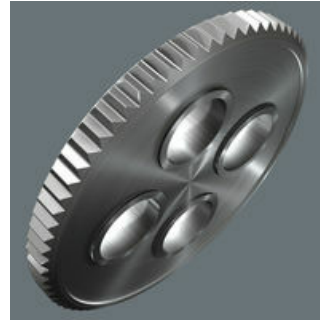


Zyklus Mini



For all difficult-to-access applications.

Small return angle



The fine tooth mechanism, with its 60 teeth, allows a small return angle of only 6° - ideal for precision work.

Rapid screwdriving



High working speeds can be attained with the Zyklus Mini ratchet. The thumb wheel is important, enabling more rapid screwdriving, and the lever of the Zyklus Mini only needs to be used for the final tightening of the screw.

Slim design



Its slim design makes it ideal for all particularly confined working situations.

Is such a small tool sufficiently resilient?



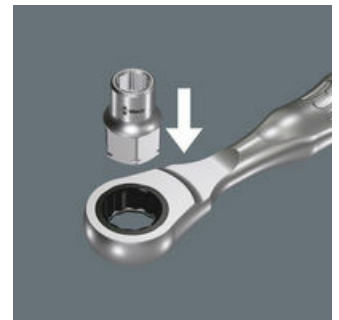
The Zyklus Mini 1 can withstand at least 65 Nm. That is far more power than can normally be transferred to such a small tool.

What parts can be connected to the Zyklus Mini 1?



Bits and sockets. Bits can be connected directly. However, a holder can be connected first and then the bit can be attached to this. This then serves as an extension with a free-turning sleeve. An adaptor e.g. Wera 870/1 is needed for sockets - 1/4" hexagonal on a square drive (included in the Bit-Check and with the individual Zyklus Mini 1 in the set).

Zyklus Mini 2



The Zyklus Mini 2 is suitable for the direct attachment of the special Wera Zyklus sockets 8790 FA. These sockets feature a very low height, ideal for confined working spaces.

Web link

https://products.wera.de/en/zyklus_ratchets_and_accessories_zyklus_mini_zyklus_mini_1_kk_zyklus_mini_2.html

Wera - KK Zyklus Mini 2
05135918001 - 4013288182180

Wera Werkzeuge GmbH
Korzter Straße 21-25
D-42349 Wuppertal
Tel: +49 (0)2 02 / 40 45-0
E-Mail: info@wera.de

Zyklus Mini 1

Set contents:

8001 A Bit Ratchet 1/4", 1/4" x 87 mm



1x 1/4" x 87 mm



8005 Zyklus Mini 2 Ratchet, 107 mm

05003660001

1x 107 mm



813 Bitholding screwdriver, 1/4" x 78 mm

05051274001

1x 1/4" x 78 mm



870/1 Adaptor, 1/4" x 25 mm

05136000001¹⁾

1x 1/4" x 25 mm



1) With friction ball; for manual nut spinner sockets

Web link

https://products.wera.de/en/zyklus_ratchets_and_accessories_zyklus_mini_zyklus_mini_1_kk_zyklus_mini_2.html

Wera - KK Zyklus Mini 2
05135918001 - 4013288182180

Wera Werkzeuge GmbH
Korzter Straße 21-25
D-42349 Wuppertal
Tel: +49 (0)2 02 / 40 45-0
E-Mail: info@wera.de

Kraftform Kompakt Zyklus Mini 2, 27 pieces

Zyklus Mini 1

851/1 Z bits, PH 1 x 25 mm



05072070001	1x PH 1 x 25 mm
05072072001	1x PH 2 x 25 mm

855/1 Z bits, PZ 1 x 25 mm



05072080001	1x PZ 1 x 25 mm
05072082001	1x PZ 2 x 25 mm

867/1 TORX® bits, TX 10 x 25 mm



05066485001	1x TX 10 x 25 mm
05066486001	1x TX 15 x 25 mm
05066487001	1x TX 20 x 25 mm
05066488001	1x TX 25 x 25 mm
05066490001	1x TX 30 x 25 mm
05066491001	1x TX 40 x 25 mm

840/1 Z bits, 3 x 25 mm



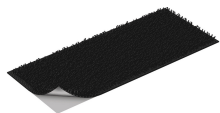
05056315001	1x 3 x 25 mm
05056320001	1x 4 x 25 mm
05056325001	1x 5 x 25 mm
05056330001	1x 6 x 25 mm

8790 FA Zyklus socket with 1/4" and Hexagon 11 drive, 4 mm



05003665001	1x 4 mm
05003667001	1x 5 mm
05003668001	1x 5.5 mm
05003669001	1x 6 mm
05003670001	1x 7 mm
05003675001	1x 8 mm
05003690001	1x 10 mm
05003684001	1x 12 mm
05003685001	1x 13 mm

Hook and Loop Fastener Strip 120, 120 x 50 mm



1x 120 x 50 mm

Web link

https://products.wera.de/en/zyklus_ratchets_and_accessories_zyklus_mini_zyklus_mini_1_kk_zyklus_mini_2.html

Wera - KK Zyklus Mini 2
05135918001 - 4013288182180

Wera Werkzeuge GmbH
Korzerter Straße 21-25
D-42349 Wuppertal
Tel: +49 (0)2 02 / 40 45-0
E-Mail: info@wera.de